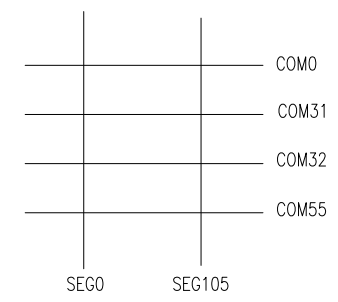
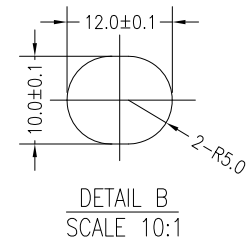
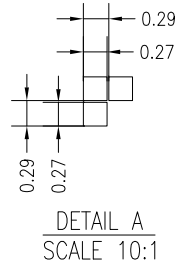
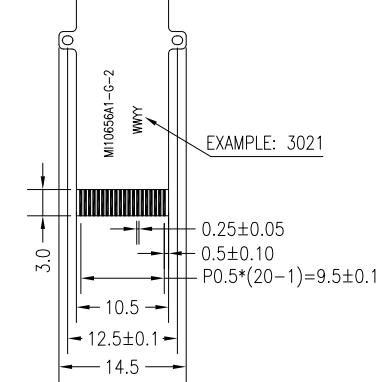
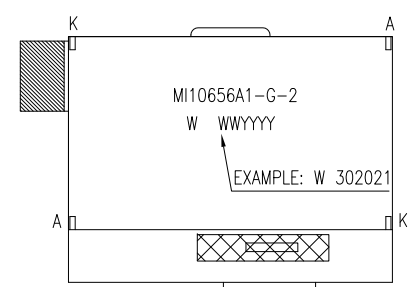
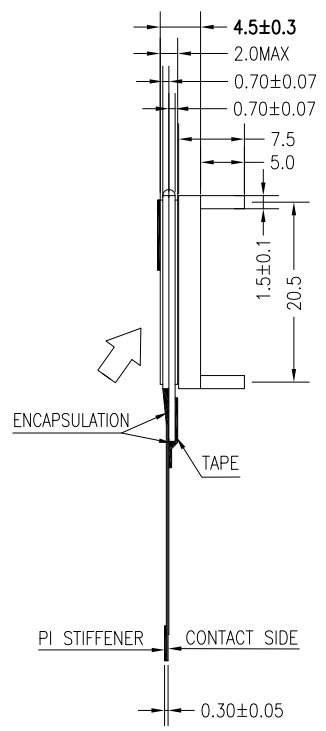
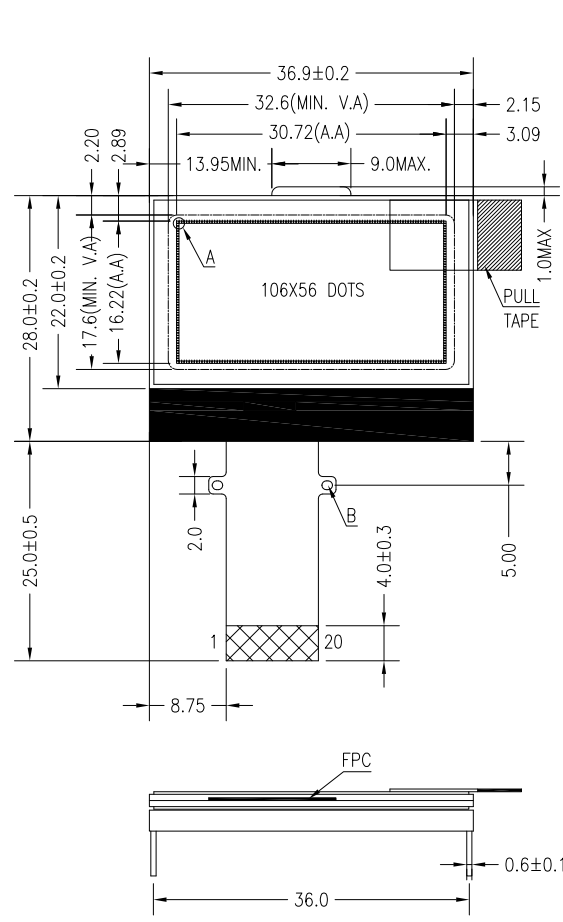


PIN ASSIGNMENT	
PIN	SYMBOL
1	NC
2	VG
3	NC
4	NC
5	NC
6	NC
7	XVO
8	VO
9	NC
10	NC
11	NC
12	NC
13	VSS
14	VDD
15	SDA
16	SCL
17	AO
18	RSTB
19	CSB
20	NC



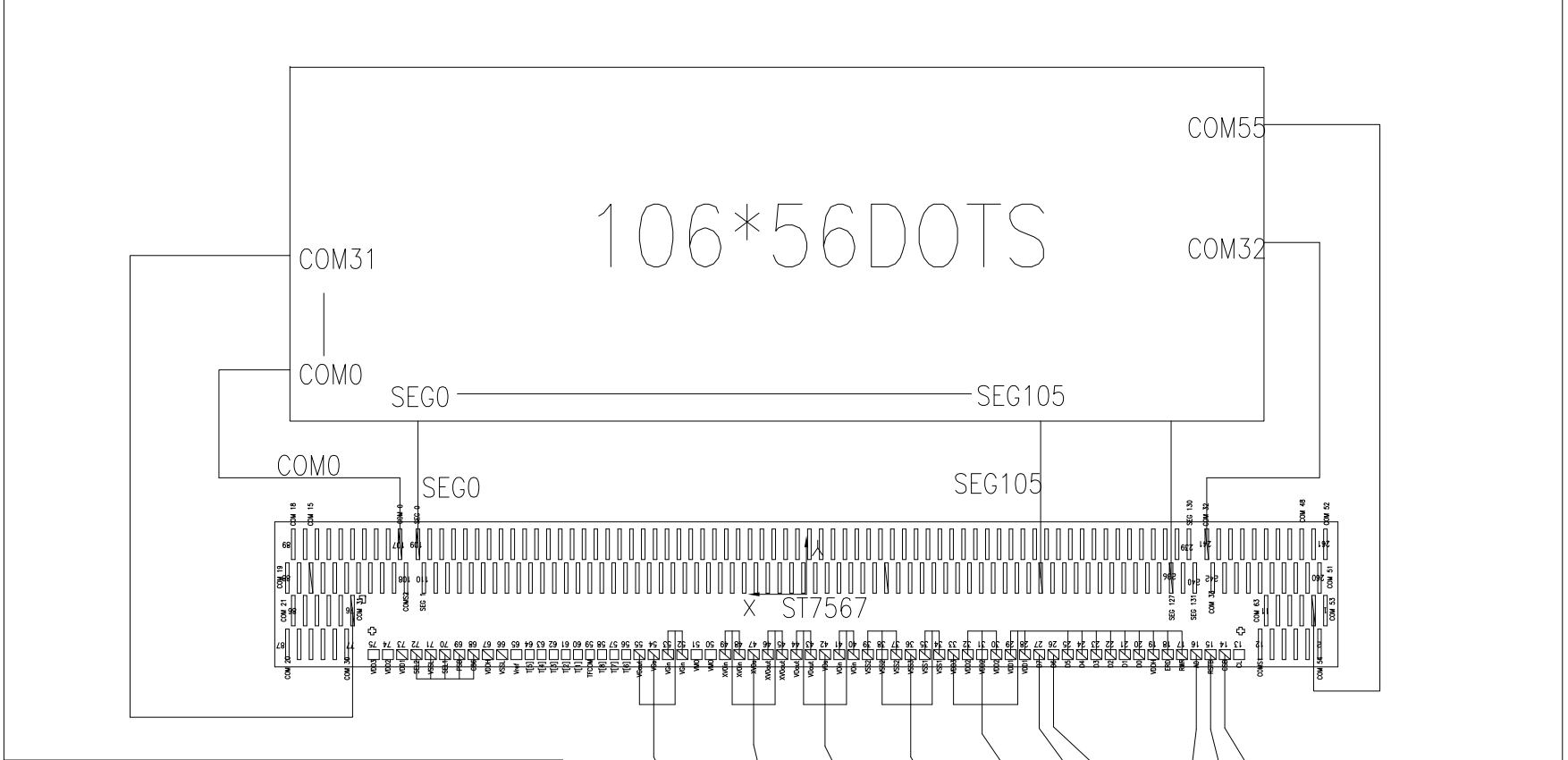
NOTES:

1. DISPLAY TYPE: FSTN, TRANSLETIVE, POSITIVE
2. OPERATING VOLTAGE: VDD=3.0V, VOP=9.5V
3. DRIVE METHOD: 1/65DUTY, 1/9BIAS
4. VIEWING DIRECTION: 6:00 O'CLOCK
5. DRIVER IC: ST7567-G4B OR THE EQUIVALENT
6. OPERATING TEMP.: -20°C ~ 70°C
7. STORAGE TEMP.: -30°C ~ 80°C
8. LED BACKLIGHT: 8-CHIP YELLOW-GREEN LED, If=40mA, Vf=4.2V
9. THE SINGLE LAYER AREA OF FPC IS BENDBLE AND THE BENDING RADIUS MUST BE NOT LESS THAN 1.5MM
10. GENERAL TOLERANCE: ±0.3MM
11. ROHS COMPLIANT

MULTI-INNO TECHNOLOGY CO., LTD.

DRAWN BY:	RITA	2021.08.20		MODULE P/N:
CHECKED BY:			SCALE : 1/1	MI10656A1-G-2
APPROVED BY:			UNIT: mm	DESCRIPTION:
VERSION NO:	01		SHEET NO.: 1/2	GRAPHIC MODULE

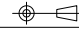
VER.	REVISED DESCRIPTION	REVISER	DATE
01	FIRST ISSUE	RITA	2021.08.20



1
3*NC
ESD
3*NC
Vg
Vg
Xv0
Xv0
V0
V0
VSS
VSS
VDD
VDD
SDA
SCL
A0
RSTB
CSB
3*NC
ESD
3*NC

29

 MULTI-INNO TECHNOLOGY CO., LTD.

DRAWN BY:	RITA	2021.08.20		MODULE P/N:
CHECKED BY:			SCALE : 1/1	M110656A1-G-2
APPROVED BY:			UNIT: mm	DESCRIPTION:
VERSION NO:	01		SHEET NO.: 2/2	GRAPHIC MODULE

01	FIRST ISSUE	RITA	2021.08.20
VER.	REVISED DESCRIPTION	REVISER	DATE